

# INSTALLATION INSTRUCTIONS

## SINGLE-HANDLE KITCHEN FAUCET

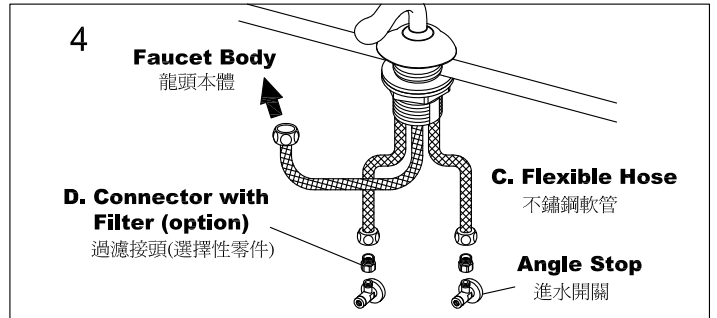
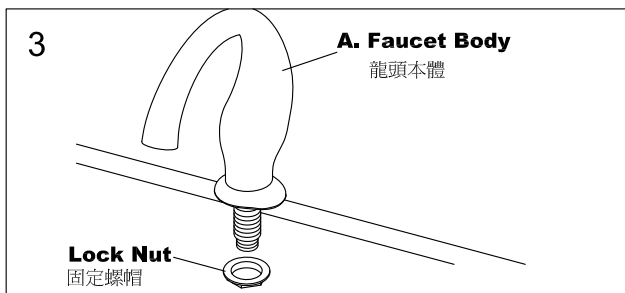
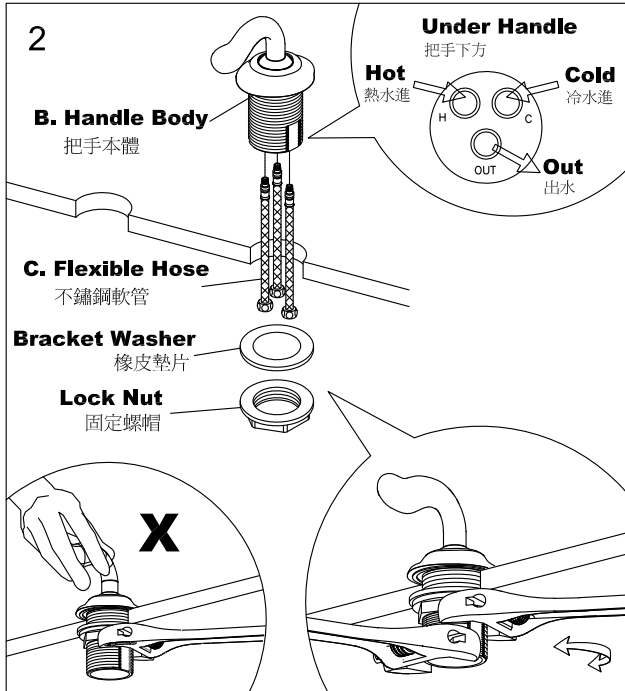
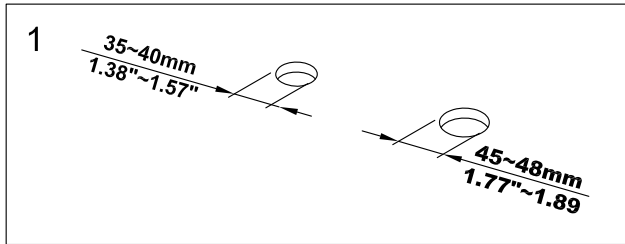
### 廚房龍頭安裝說明

PATENT NUMBER:

專利號碼:

D137663

D137665



### CAUTION: Prevent The Risk Of Product Damage .

注意：為增加產品使用壽命，請依說明清潔供水管路。

- Turn on the angle stops (water suppliers) and run for 1 minute before connect supply hoses (flexible hoses) to faucet body. Or b./ 安裝編織管之前，先把供水開關全開排水一分鐘。或 b./
- Connect faucet and angle stops with supply hoses (flexible hoses) tightly, remove the aerator, fully turn on the hot and cold water valves and run for 1 minute, and then shut off the water and reinstall the aerator.

把龍頭、供水開關及編織管接好並鎖緊之後，把起泡器移開，把熱水及冷水全部轉開一分鐘，然後把水關掉再把起泡器裝回去。

- Drill 2 holes on appropriate position.  
在適當的位置鑽2個孔。
- Insert **Flexible Hoses** through deck hole (45~48mm) and screw them into **Hot & Cold inlets & Outlet** under **Handle Body**. Position **Handle Body** for fixture, place **Lock Nut** with **Bracket Washer** onto **Handle Body**, and then tighten **Lock Nut** securely with two adjustable open wrenches.  
將不鏽鋼軟管穿過洗臉盆洞口並且鎖入把手本體，從把手本體下方依序套入橡皮墊片和固定螺帽，確認把手方向位置後，用扳手鉗夾住本體下方的平面處，再用另一隻扳手將螺帽鎖緊。
- Position **Faucet Body** on the deck for fixture and tighten the **Lock Nut** securely.  
從龍頭本體下方套入螺帽，確認龍頭方向位置後，鎖緊螺帽固定龍頭。
- Install **Connector with Filter (option)** onto the outlet of angle stop first. Connect hot and cold **Flexible Hoses** to angle stops/**Connector with Filter (option)**, and then connect outlet **Flexible Hose** to **Faucet Body**.

連接過濾接頭（選擇性零件）到進水開關，再將冷熱進水不鏽鋼軟管與過濾接頭連結，然後將出水不鏽鋼軟管連接至龍頭本體，確認完成安裝程序。

## FIXING CONTENTS

### 組配件內容

