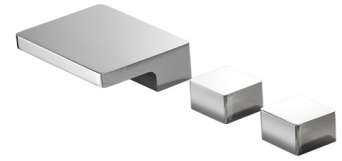


Bathtub Faucet
6909-M0-80CP

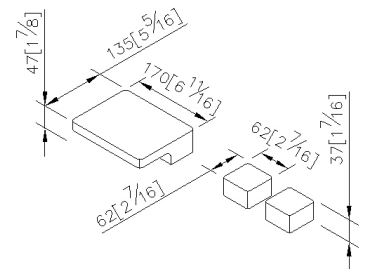
INTRODUCTION:

Designed main body style as square shape, the aesthetics of symmetry exudes a stylish and charming atmosphere. With R angle processed, it softens the sharp angle of hard steel, and brings more soft and elegant atmosphere to a bathroom space.



DESCRIPTION:

- 1.Ceramic cartridge with brass shell and JAPAN (MARUWA) ceramic disc.
- 2.Justime finishes resist corrosion and tarnish.
- 3.Chrome plated finish meets the standard of ASTM-SC2.
- 4.Stainless steel braided hose with SANTOPRENE tube (meets NSF approval), can bear 15Kgf/cm2 water pressure and 120°C heat.
- 5.Thread of braided hose: FT- 3/4-14 NPSM (for valve).
- 6.The square design could improve the elegance for the environment.
- 7.Coordinates with other products in 6909 collection.



unit:mm[inch]

Certification:

Fixing Kits:

- 1.N/A

AWARD: